



ROYAL THAI SURVEY DEPARTMENT

(RTSD)



MISSION AND ORGANIZATION

RTSD

**SPECIAL SERVICES
UNDER SUPREME
COMMAND**

RTSD MISSION

- **LAND AND AERIAL SURVEY**
- **GEODESY AND GEOPHYSIC WORKS**
- **EDUCATION**

RTSD ORGANIZATION



Command Group

RTSD Director

**Deputy Director
for Administration**

**Deputy Director
for Technical Affairs**

**Deputy Director
for Operations**

Technical Officer (1)

Technical Officer (2)

**RTSD Command
Headquarters**

**Judge Advocate
Officer**

RTSD HEADQUARTERS



RTSD Operation Group

**Geodesy and
Geophysics Div.**

**International
Boundary Div.**

Mapping Div.

Geography Div.

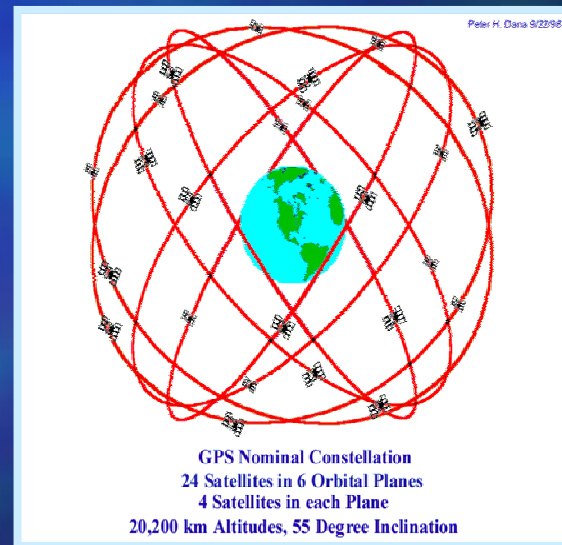
Reproduction Div.

Aerial Survey Div.

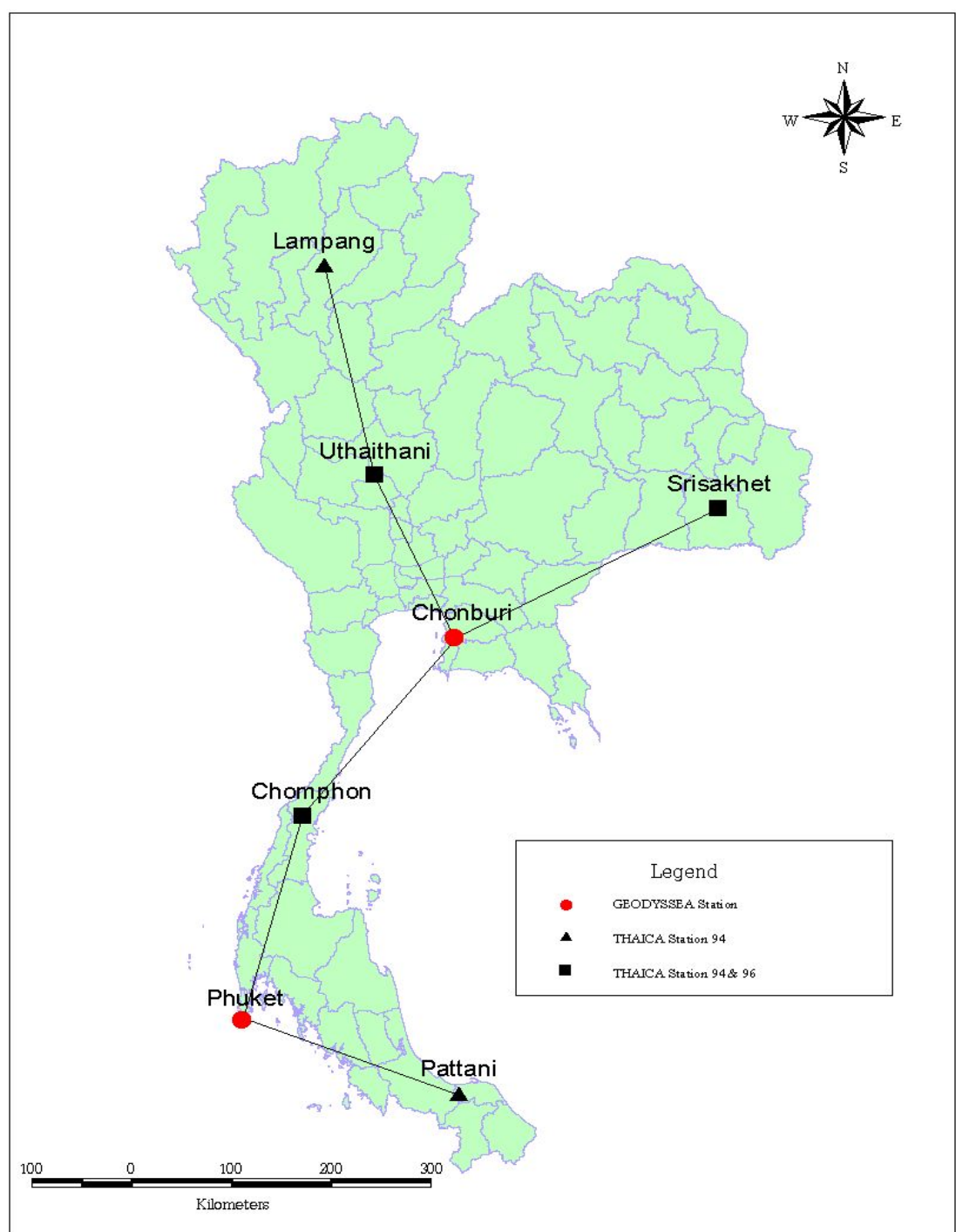
**Map Information
Center**

Geodesy and Geophysics Division

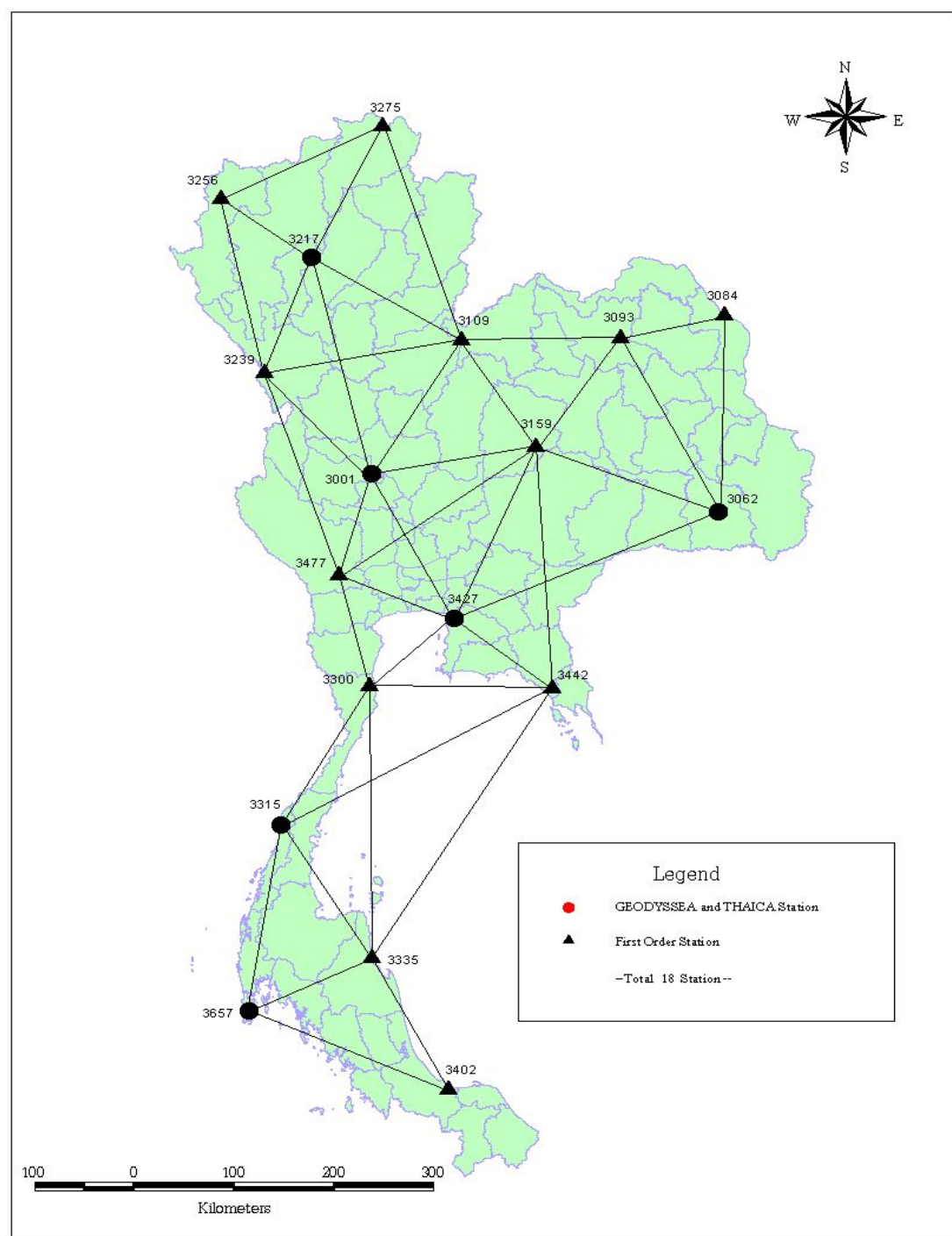
Geodesy and Geophysics Division is responsible for observing coordinates, gravity and electronic works related to mapping activities.



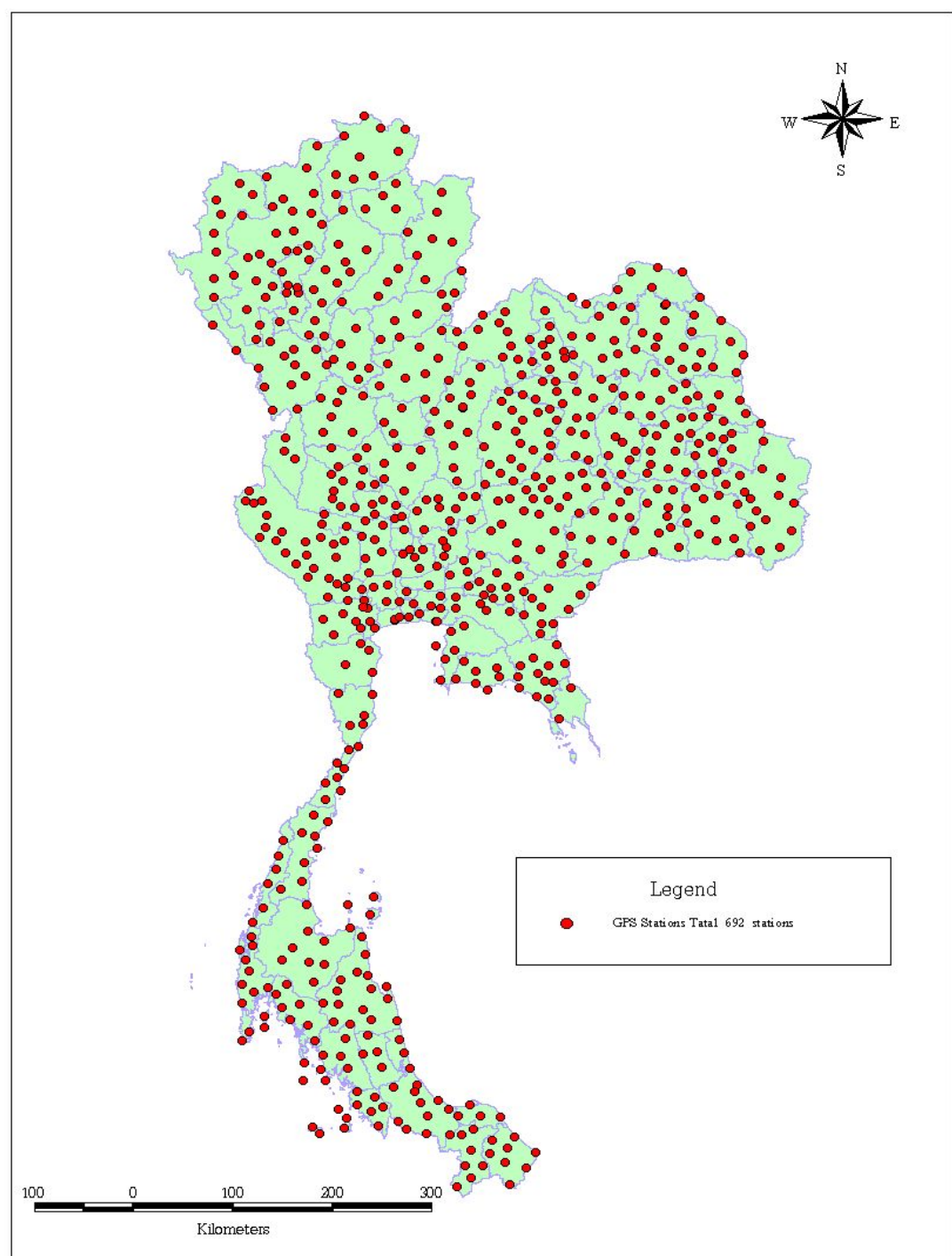
โครงข่ายอ้างอิงของประเทศ (Reference Frame)



โครงข่ายหลัก (Primary Network)



โครงข่ายรอง (Secondary Network)

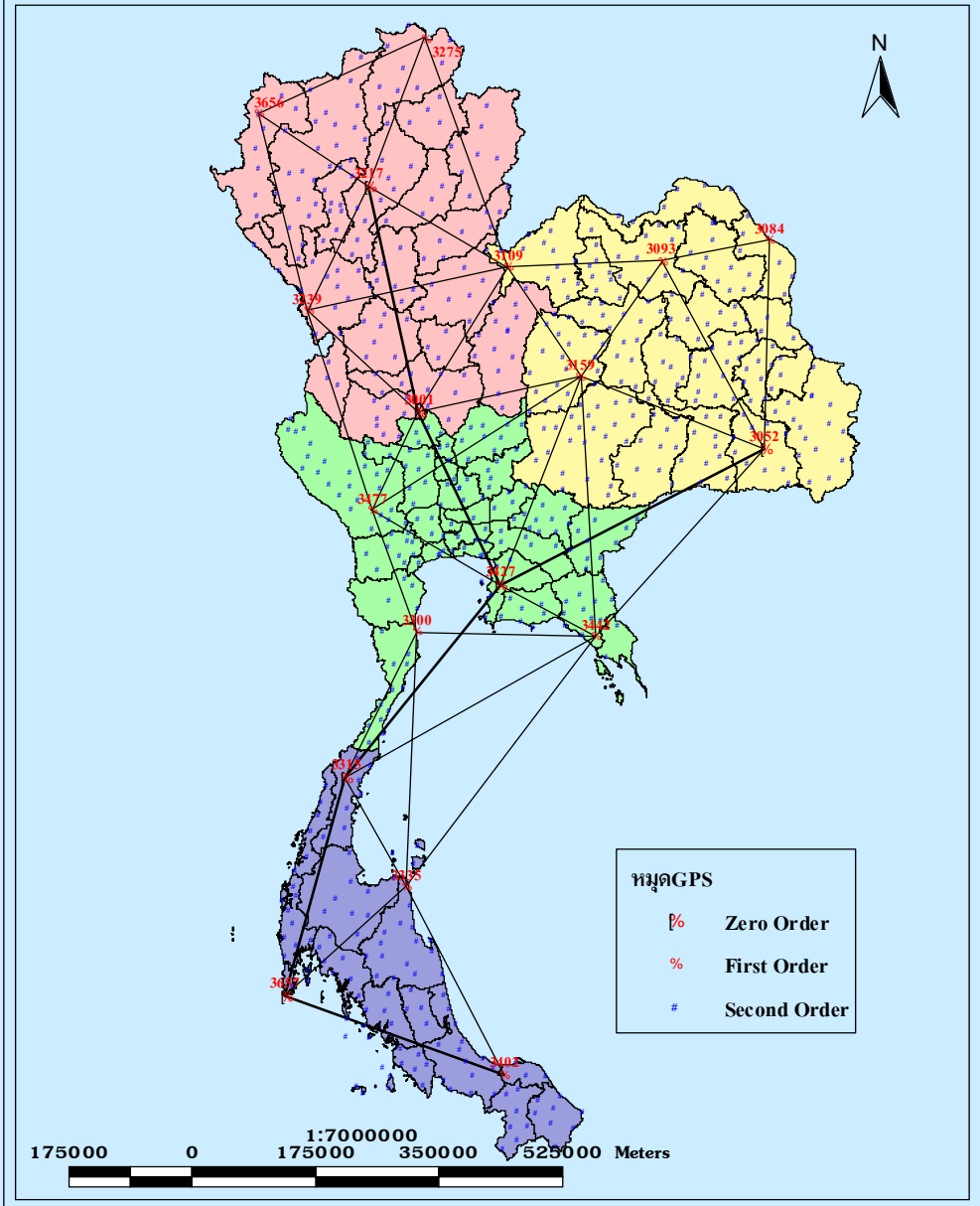




โครงข่าย GPS ประเทศไทย

กรมแผนที่ทหาร กองบัญชาการทหารสูงสุด

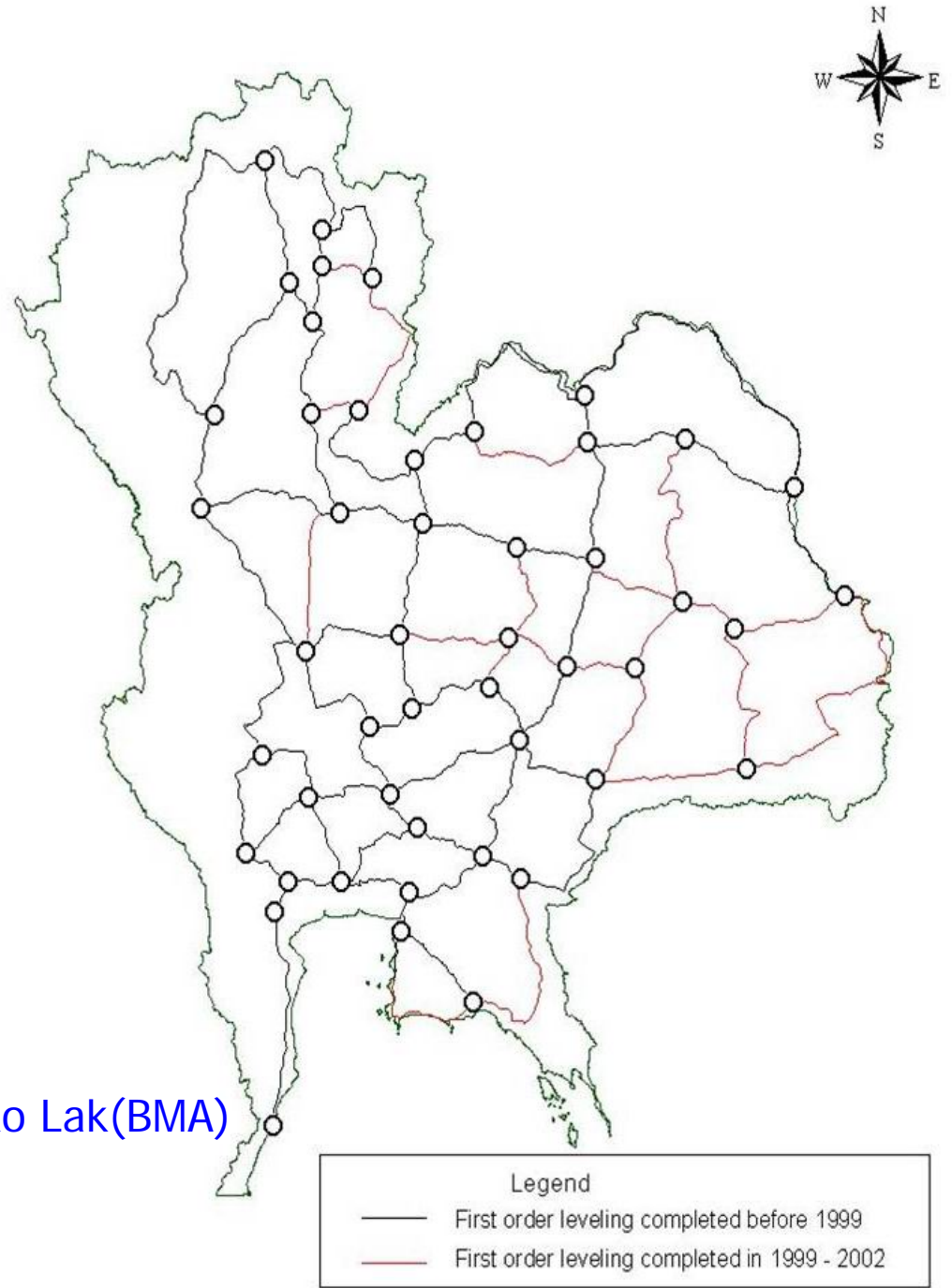
วันที่พิมพ์ 07 / 03 / 2545



**National GPS Network
of Thailand**

Vertical Control Network upper Ko Lak

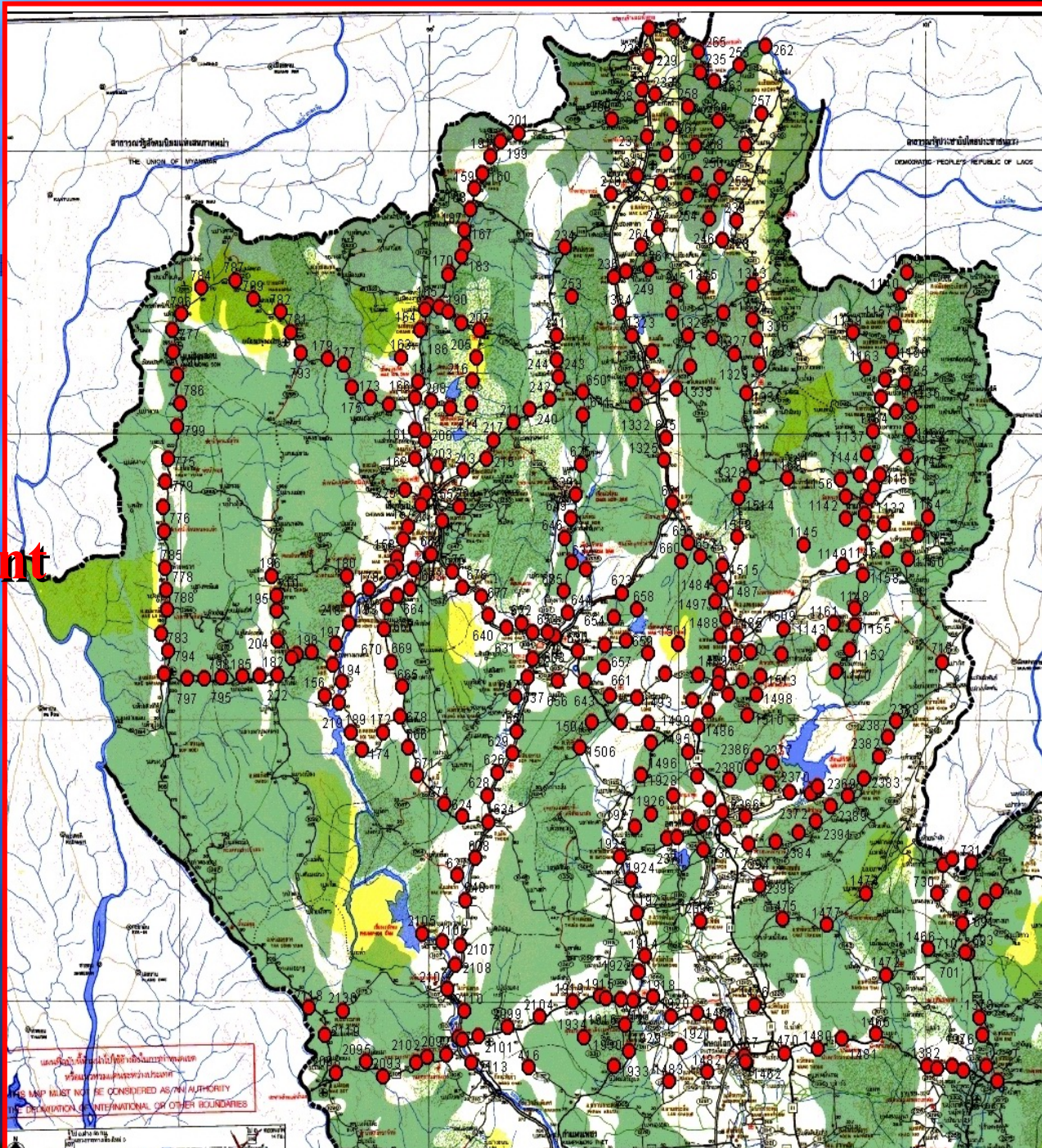
Ko Lak(BMA)



**Vertical Control
Network lower Ko Lak**



Gravity Measurement



International Boundary Division

International Boundary Division is assigned for land demarcation and survey between Thailand and neighbouring countries



การก่อสร้างหลักเขตแดน



Mapping Division

Mapping Division conducts data surveys for the production of the ground maps



เครื่องมือทำแผนที่อัตโนมัติ



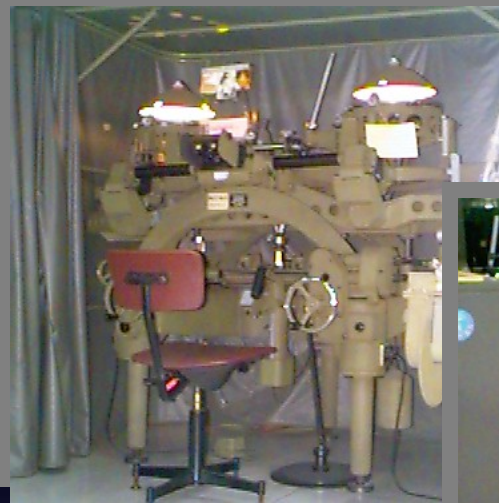
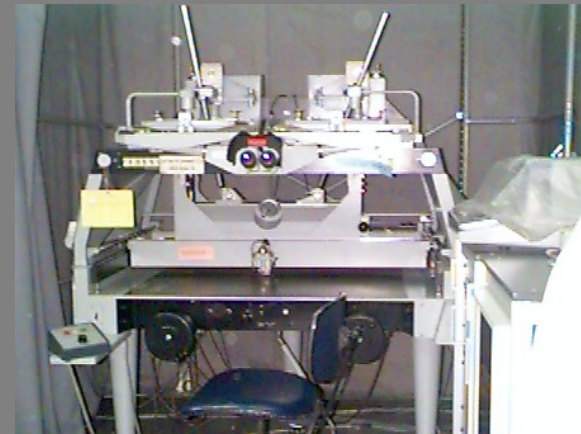
แผนที่ภูมิประเทศ



Past

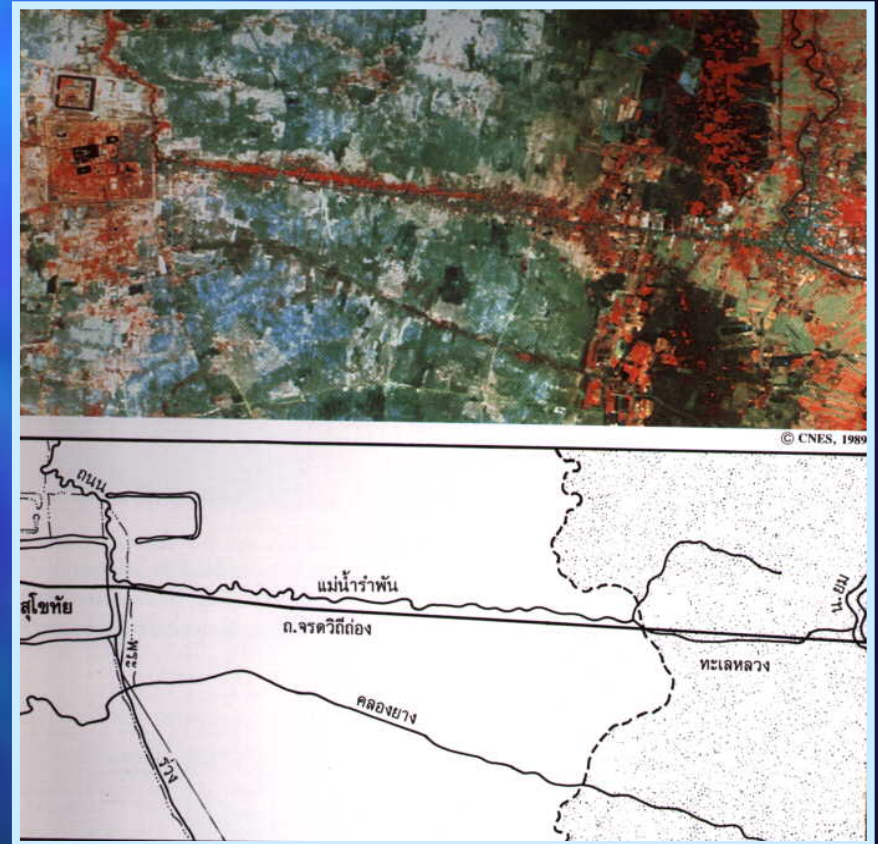


Present



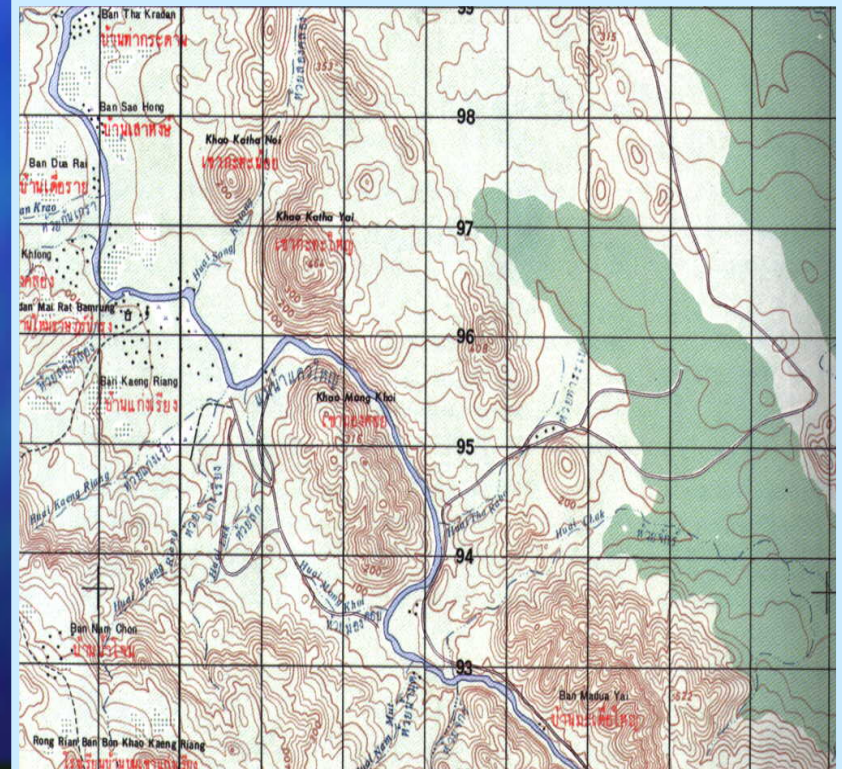
Geography Division

This division surveys geographical features of the country and produces maps and related document for military and official use.



Reproduction Division

It is responsible for photography, map reproduction, printing of books and documents and maintenance of mapping equipment.



Aerial Survey Division



ภาพถ่ายทางอากาศ



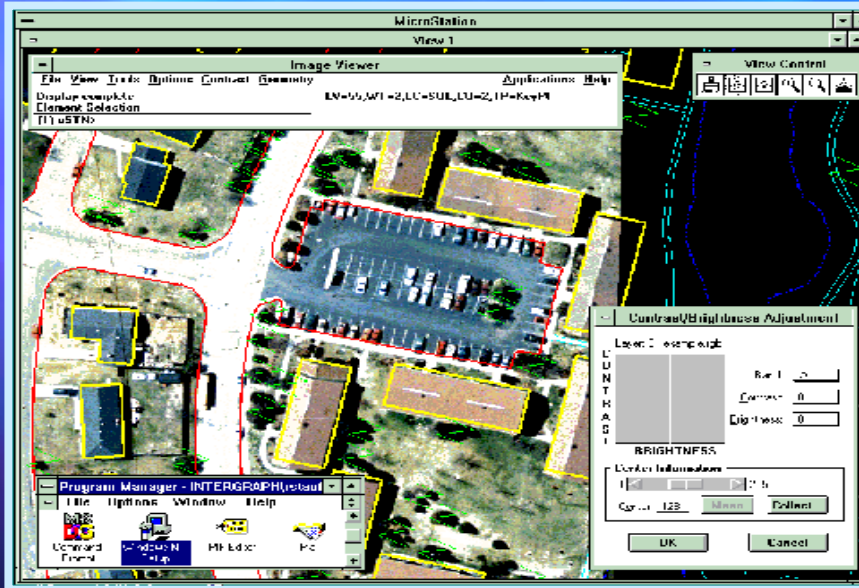
เครื่องบินถ่ายภาพ



เครื่องล้างฟิล์ม

This division conducts aerial photography and survey in support of mapping activities and country development plans. It develops aerial films and also produces aerial photographs.

Map Information Center



It is responsible for collection, analysing and updating map information in provision