



**UNIVERSITI TEKNOLOGI
MALAYSIA**

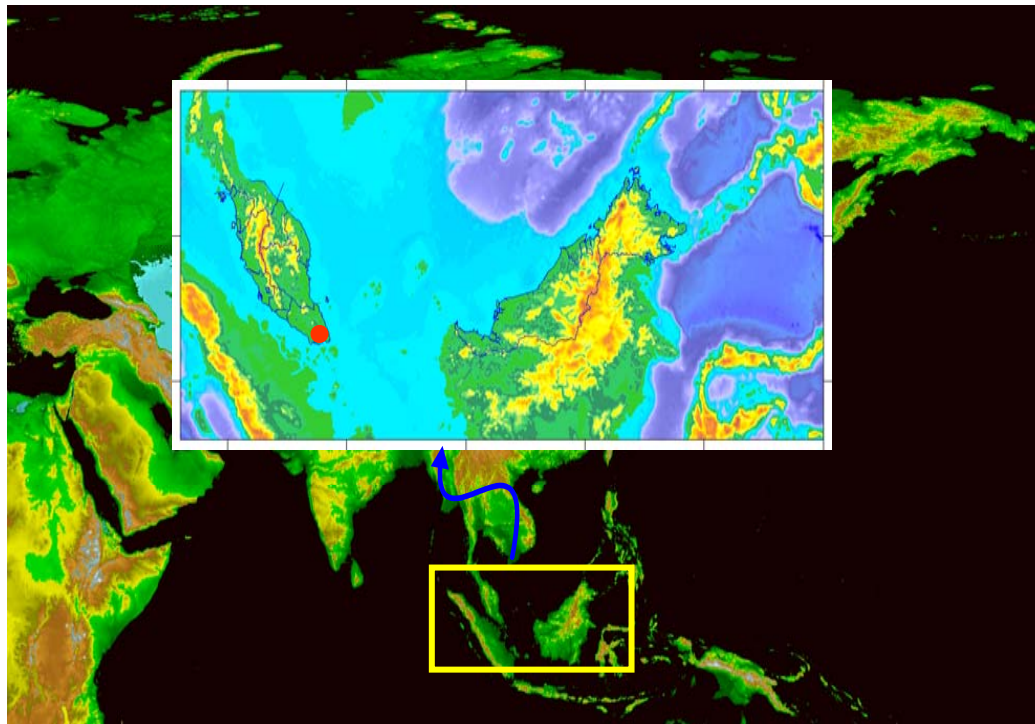
SEPINTAS LALU

**UNIVERSITI TEKNOLOGI MALAYSIA
SKUDAI
JOHOR DARUL TAKZIM**



Fakulti Kejuruteraan dan Sains Geoinformasi
Universiti Teknologi Malaysia, 81310 UTM Skudai, Johor
<http://www.fksg.utm.my>

Global View of Malaysia



Universiti Teknologi Malaysia

Historical Background

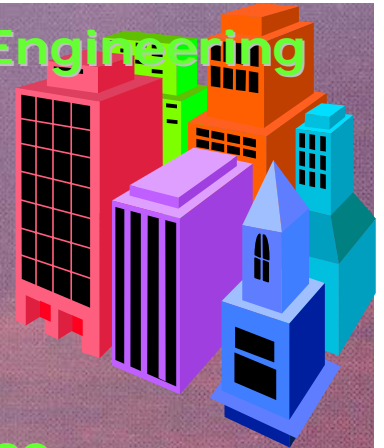
- 1904 Technical studies class room
- 1906 Technical School
- 1946 Technical College
- 1972 National Institute of Technology
- 1975 Universiti Teknologi Malaysia
- 1985 Main campus moved to Johor Bahru



Universiti Teknologi Malaysia

Faculties

1. Faculty of Geoinformation Science and Engineering
2. Faculty of the Built Environment
3. Faculty of Civil Engineering
4. Faculty of Mechanical Engineering
5. Faculty of Electrical Engineering
6. Faculty of Chemical and Natural Resource Engineering
7. Faculty of Computer Science and Information System
8. Faculty of Management and Human Resource Development
9. Faculty of Education
10. Center for Diploma studies



Universiti Teknologi Malaysia

Basic Figures 2003

- ✧ Number of Students 33,184
- ✧ Number of Academic Staff 1,675
- ✧ Number of Support Staff 2,332
- ✧ Annual Budget RM320,000,000
- ✧ Research Grants Received RM86,000,000
- ✧ Land areas 1,777 Hecters





FACULTY OF GEOINFORMATION SCIENCE AND ENGINEERING



UNIVERSITI TEKNOLOGI MALAYSIA
The Discovery University

COURSES

- **Undergraduate level**

Bachelor of Science Geoinformatic

Bachelor of Geomatic Engineering

**Bachelor of Science Land Administration
and Development**

Bachelor of Real Estate Management

Bachelor of Science Remote Sensing

- **Postgraduate Level**

Msc by research and course work

Ph.D



CENTERS AND LABORATORIES

- **INTEG**
- **GPS Lab**
- **Photogrammetric Lab**
- **GIS Lab**
- **Remote Sensing Lab**
- **Hidrographic Lab**



UNIVERSITI TEKNOLOGI MALAYSIA
The Discovery University

Skudai, Johor Darul Takzim



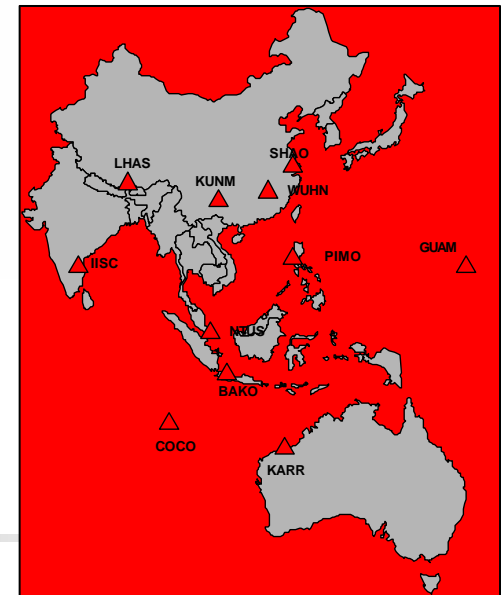
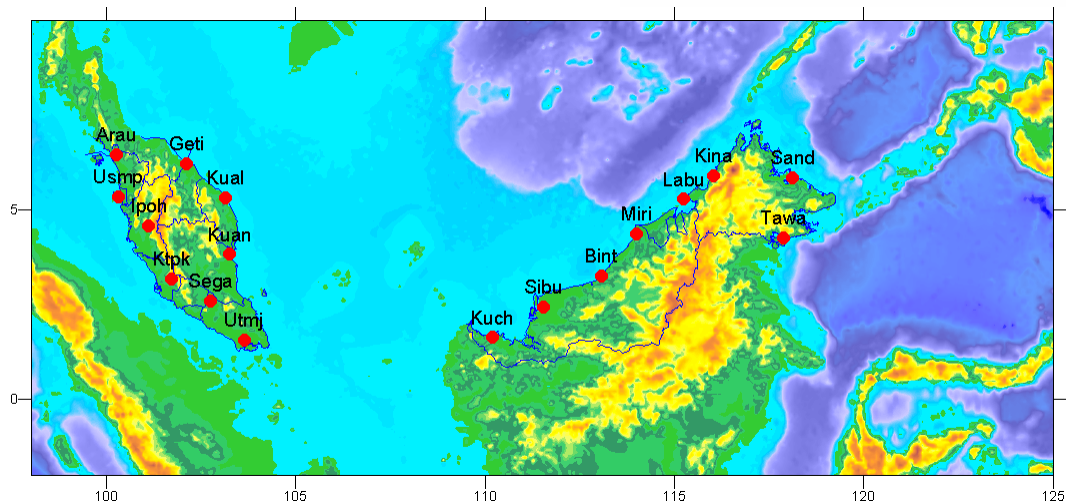
CURRENT RESEARCHES

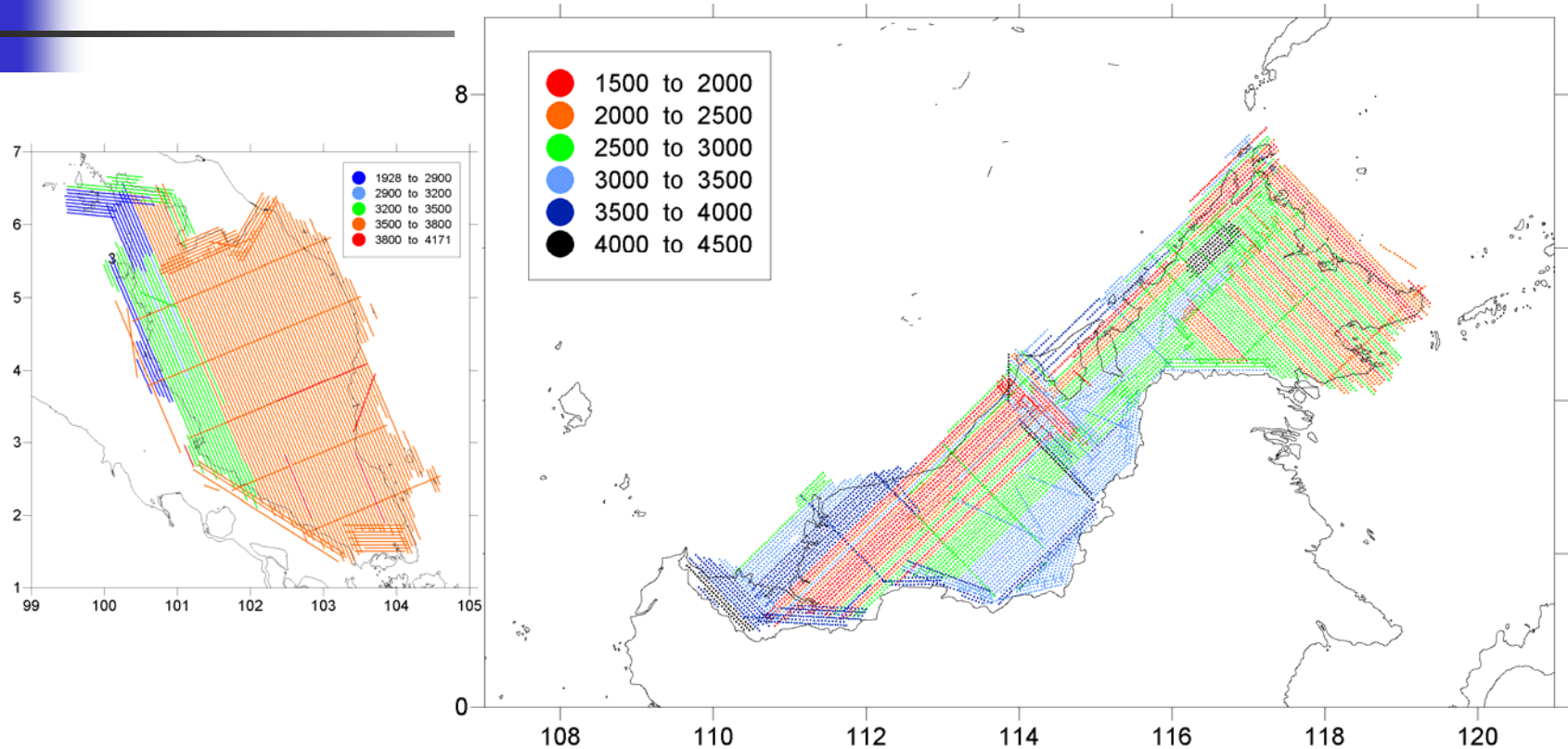
- **High Precision GPS**
 - GDM 2000
 - Land subsidence/Deformation monitoring
 - Atmospheric studies
- **Gravity field determination and analysis**
 - Malaysian Precise Geoid
 - Fitted geoid- GPS heighting
 - Ocean Tide modelling using SALT
- **Cadastral surveying**
 - Coordinated Cadastral System



Realization of GDM2000

⊕ 17 MASS Stations + 11 IGS Stations Forming the Zero Order Network

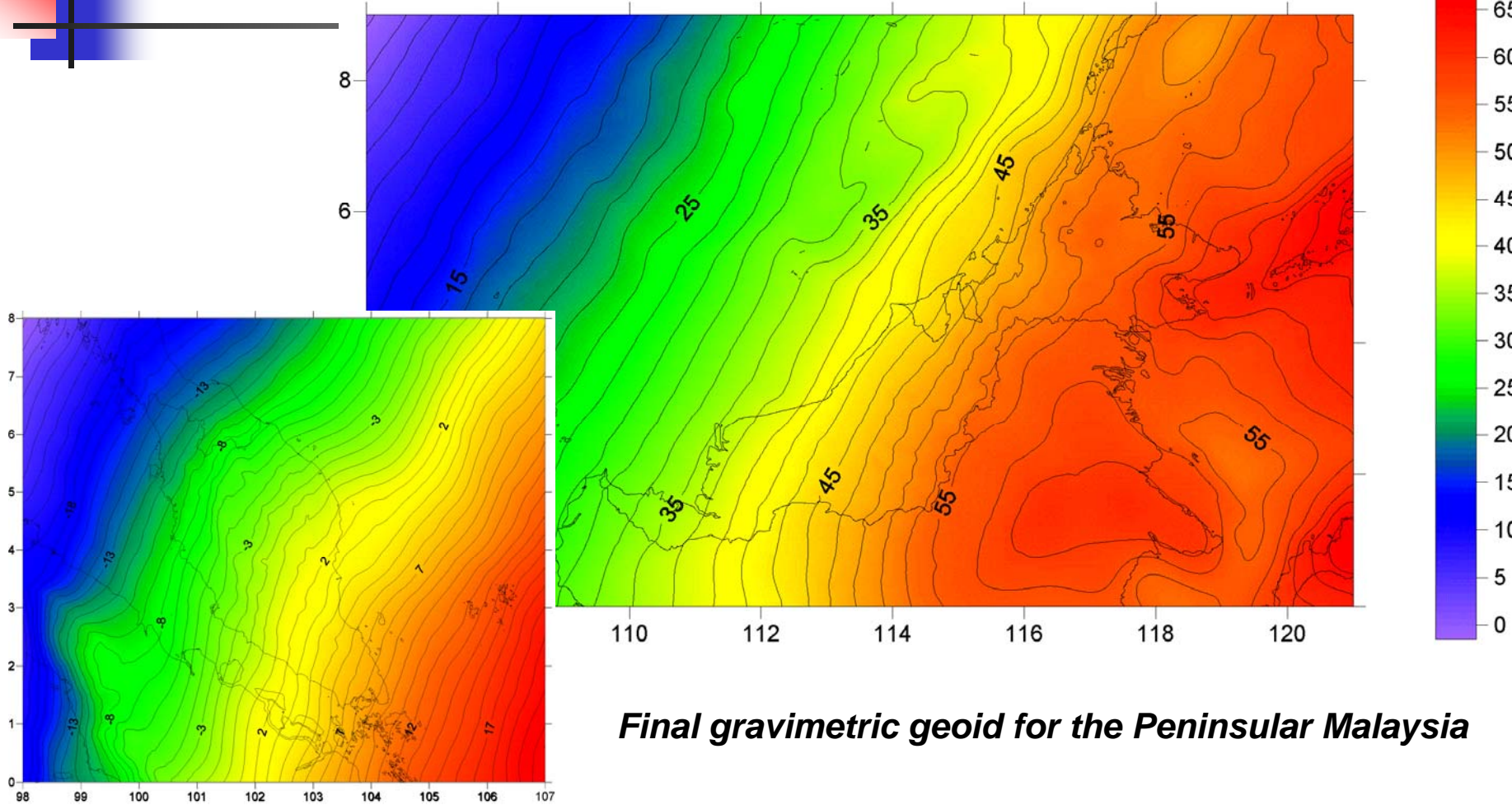




Gravity data from airborne gravity survey

Skudai, Johor Darul Takzim





Final gravimetric geoid for the Peninsular Malaysia



CURRENT RESEARCHES

- **Remote Sensing and GIS**
 - Tropical Ecology
 - Eco-climate mapping
 - Land use, soil erosion and yield prediction
 - Dugong and seagrass
- **Close Range Photogrammetry**
 - Cranio-facial
 - 3D Engineering application
- **Hidrography**
 - Flood studies
 - Tidal prediction



A photograph of a large, multi-story building with a courtyard. The building has a mix of light-colored walls and dark window frames. In the foreground, a person is walking on a paved path. There are some green plants and a tree with red flowers in the courtyard. The text 'SEKIAN TERIMA KASIH' is overlaid in large, bold, pink letters with a black outline.

**SEKIAN
TERIMA
KASIH**